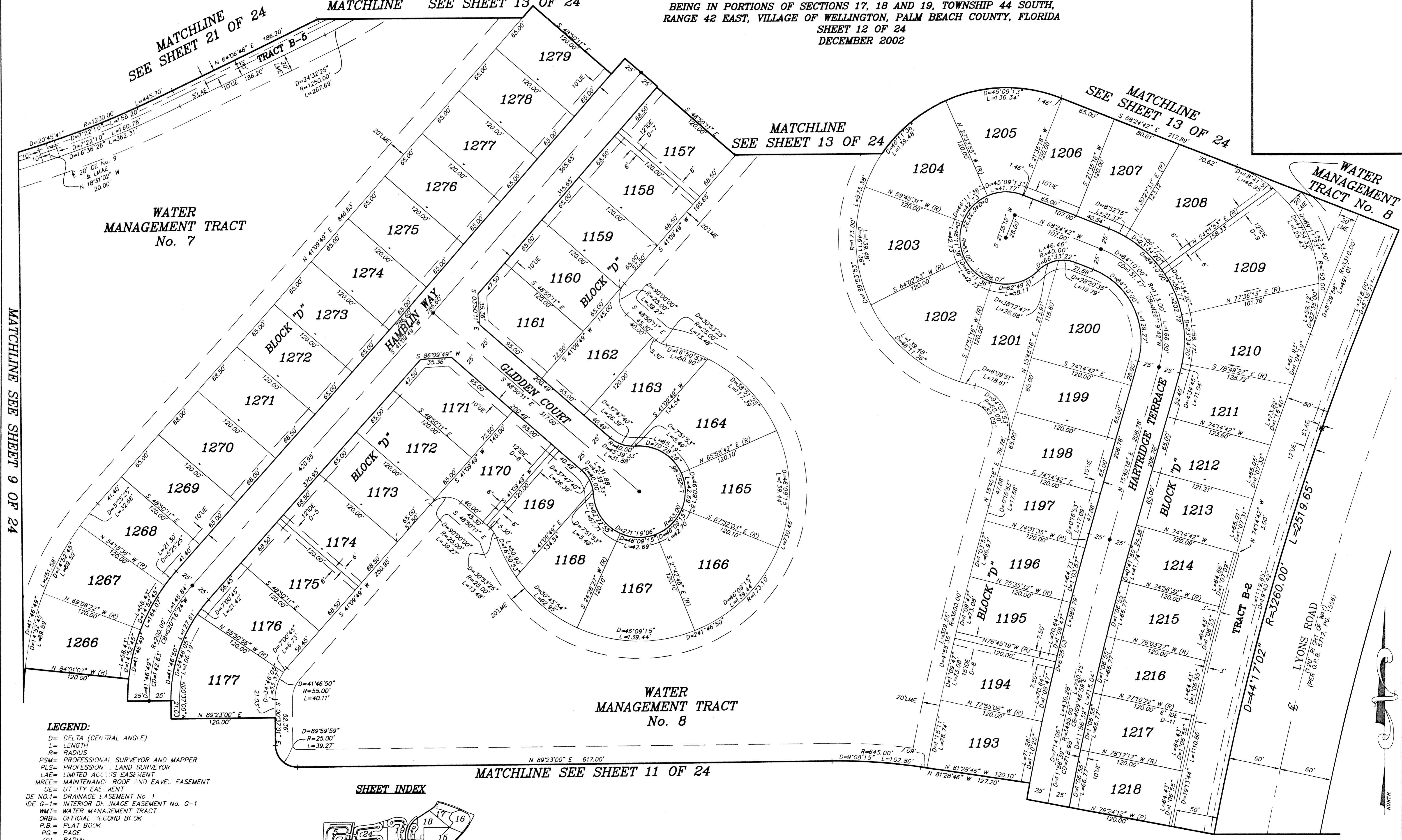


OLYMPIA - PLAT II

BEING A REPLAT OF A PORTION OF BLOCKS 19 AND 20 OF PALM BEACH FARMS COMPANY PLAT No. 3, AS RECORDED IN PLAT BOOK 2, PAGES 45 THROUGH 54 OF THE PUBLIC RECORDS OF PALM BEACH COUNTY FLORIDA. BEING IN PORTIONS OF SECTIONS 17, 18 AND 19, TOWNSHIP 44 SOUTH, RANGE 42 EAST, VILLAGE OF WELLINGTON, PALM BEACH COUNTY, FLORIDA SHEET 12 OF 24 DECEMBER 2002



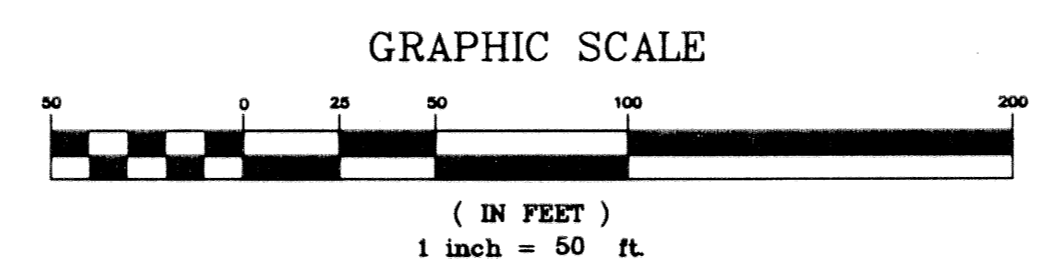
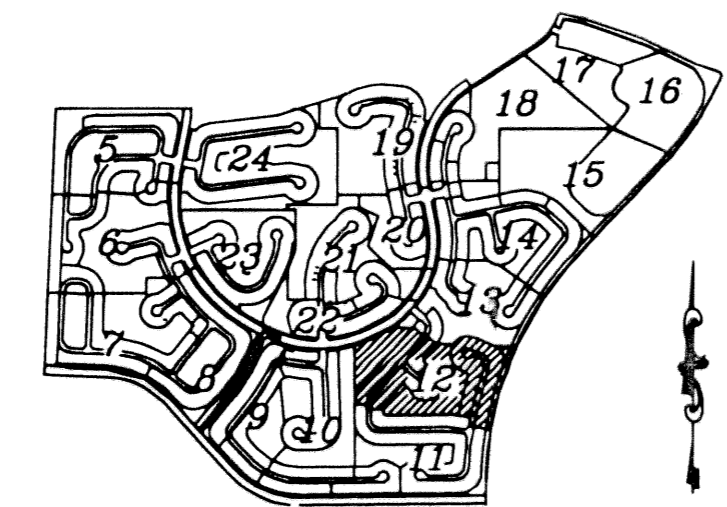
WATER MANAGEMENT TRACT No. 8

WATER MANAGEMENT TRACT No. 7

WATER MANAGEMENT TRACT No. 8

- LEGEND:**
- D= DELTA (CENTRAL ANGLE)
  - L= LENGTH
  - R= RADIUS
  - PSM= PROFESSIONAL SURVEYOR AND MAPPER
  - PLS= PROFESSIONAL LAND SURVEYOR
  - LAE= LIMITED ACCESS EASEMENT
  - MREE= MAINTENANCE ROOF AND EAVE EASEMENT
  - UE= UTILITY EASEMENT
  - DE NO. 1= DRAINAGE EASEMENT No. 1
  - IDE G-1= INTERIOR DRAINAGE EASEMENT No. G-1
  - WMT= WATER MANAGEMENT TRACT
  - ORB= OFFICIAL RECORD BOOK
  - P.B.= PLAT BOOK
  - P.C.= PAGE
  - (R)= RADIAL
  - = SET PERMANENT REFERENCE MONUMENT "LB 4318" (UNLESS OTHERWISE NOTED)
  - = PERMANENT CONTROL POINT "LB 4318"
  - LME= LAKE MAINTENANCE EASEMENT
  - ⊕= CENTERLINE
  - LMAE= LAKE MAINTENANCE ACCESS EASEMENT
  - LWDD= LAKE WORTH DRAINAGE DISTRICT
  - CB= CHORD BEARING
  - CD= CHORD DISTANCE
  - PBC= PALM BEACH COUNTY

SHEET INDEX



**NICK MILLER, INC.**  
 Surveying & Mapping Consultants  
 SUITE 105  
 2560 PALM BLVD.  
 PALM BEACH GARDENS, FLORIDA 33410  
 TEL 561 627-5200 FAX 561 627-0983  
 D.B.P.R. LICENSED BUSINESS No. 4318

OLYMPIA - PLAT II	SHEET NO.	SCALE: 1" = 50'
	<b>12</b>	DATE: DECEMBER 2002
		JOB NO. 1008.044
		FILE: PHASE II